



GAT MONTHLY MEMBERSHIP PROGRESS REPORT

Results as of: 3/31/2023

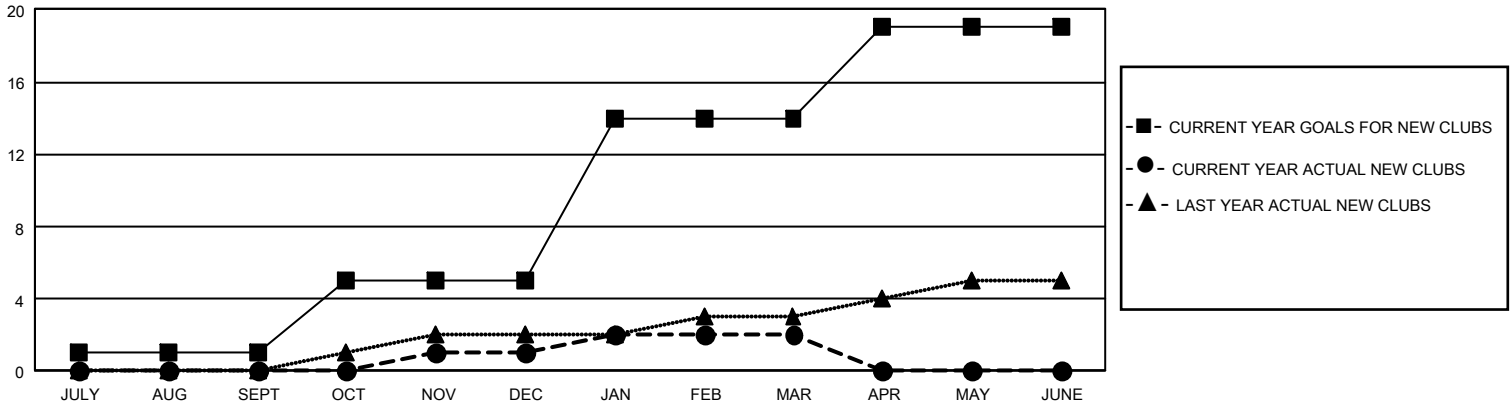
GMT Constitutional Area 3, Group G

REPORT DOES NOT INCLUDE CLUBS IN UNDISTRICTED AREAS.

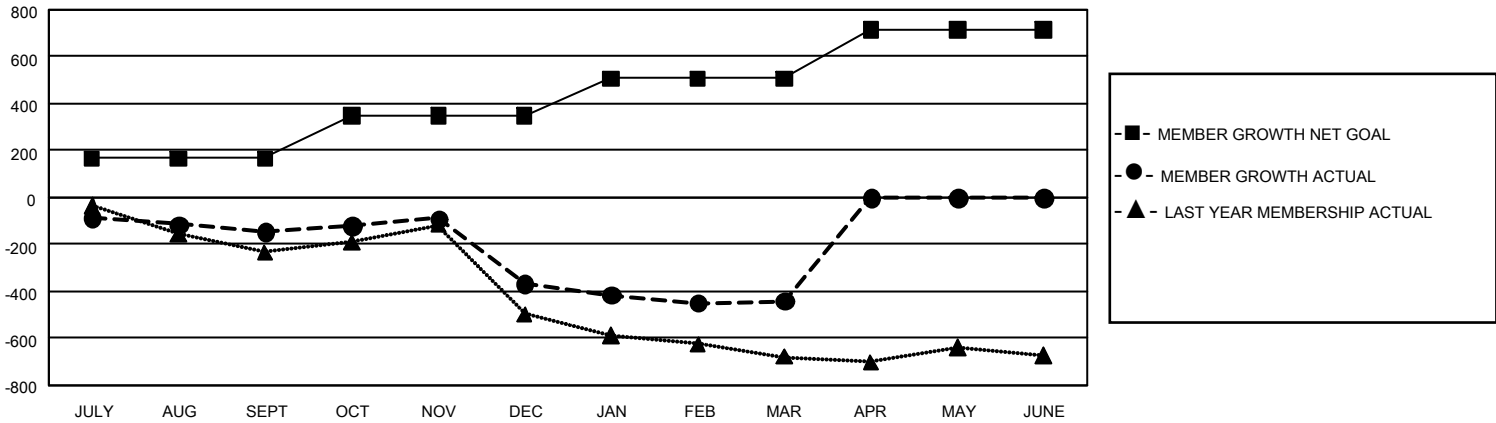
Clubs			
RESULTS FOR 2022-2023			
QUARTER	NEW CLUB GOAL	NEW CLUBS	DROPPED CLUBS
JULY/AUG/SEPT	3	0	6
OCT/NOV/DEC	12	1	13
JAN/FEB/MAR	27	1	4
APR/MAY/JUNE	15	0	0

Members			
RESULTS FOR 2022-2023			
QUARTER	MEMBER GROWTH NET GOAL	MEMBER GROWTH ACTUAL	DROPPED MEMBERS ACTUAL (including transfers)
JULY/AUG/SEPT	167	224	326
OCT/NOV/DEC	182	352	532
JAN/FEB/MAR	158	271	300
APR/MAY/JUNE	206	0	0

GOALS AND ACTUAL NEW CLUBS CUMULATIVE



GOALS AND ACTUAL MEMBERS CUMULATIVE



DROPPED CLUBS: 23 DROPPED MEMBERS DECEASED 85 CLUB CANCELLED 149 OTHER 924 TOTAL 1,158	204 CLUBS OF 495 ADDED 1 OR MORE NEW MEMBERS	GENDER DISTRIBUTION MALE 5,713 (53.52%) FEMALE 4,960 (46.47%) NON BINARY 0 (0.00%) PREFER NOT TO ANSWER 1 (0.01%)
	CLICK HERE FOR CUMULATIVE MEMBERSHIP DATA	TOTAL FAMILY UNIT MEMBERS 4,620 FAMILY MEMBERS PAYING HALF DUES 2,432